

VÁLVULAS DE BOLA / BALL VALVES

VÁLVULA DE BOLA FONDO TANQUE INOX AISI-316 CONEXIONES BSP-NPT-SW-BW BOTTON TANK BALL VALVE S. STEEL-316 CONNECTION BSP-NPT-SW-BW



VALVESEAL
valves & sealing solutions

TF-BTBV-T



UTILIZACIÓN / APPLICATION :

Industria química, petroquímica y farmacéutica, instalaciones hidráulicas.
Chemical and pharmaceutical industries, petrochemical industries, hydraulic installation.

CARACTERÍSTICAS GENERALES / GENERAL CHARACTERISTICS :

Medidas / Size DN- 1/2" to 4"
Paso Total / Full Bore.
Eje anti-expulsión / Anti blow-out stem.
Asientos PTFE + 15% FIBRA DE VIDRIO / PTFE + 15% GF seat.
Junta tórica en el eje FKM / FKM O'ring stem.
Sistema de bloqueo / Locking device.
Brida ISO 5211 / Mounting Pad ISO 5211.

NORMATIVAS / STANDARDS :

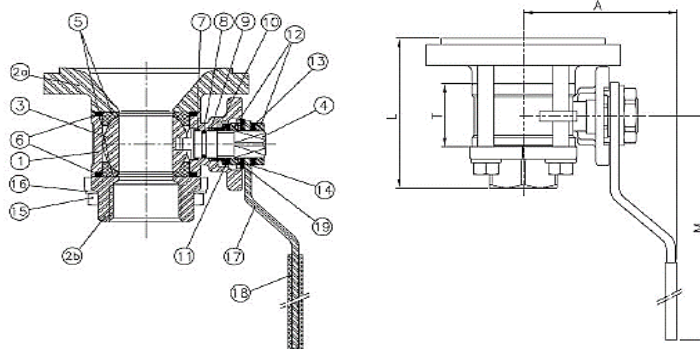
Fabricación / Manufacture according to ISO 9001 : 2015
Directiva CE / Directive 2014/68/EU: CE Nº 0038 Risk Category III module H.
Pruebas de presión / Pressure Tests according to EN12266-1, rate A.
Rosca BSP / Female BSP threaded ends according to ISO 7-1.
Rosca NPT / NPT threaded ends according to ANSI B1.20.1
Soldar SW / S.W. ends according to ASME B16.11 Schedule 40.
Soldar BW / B.W. ends according to ASME B36.10 Schedule 40.
Certificado 3.1 bajo demanda / Certificate 3.1 on request.

CONDICIONES DE SERVICIO / WORKING CONDITIONS :

Máxima presión de trabajo / Maximum Working Pressure : 63 bar.
Temperatura máxima de trabajo / Maximum Working Temperature : -25 °C / +180 °C.

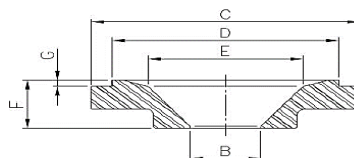
MATERIALES / CONSTRUCTION :

No.	Pieza Part	Material Material
1	Cuerpo Body	Inox A351 CF8M S.Steel A351 CF8M
2a	Brida Fondo Tank Botton Flange	Inox AISI-316L S.Steel AISI-316L
2b	Tapa Cap	Inox AISI-316 S.Steel AISI-316
3	Bola Ball	Inox A351 CF8M S.Steel A351 CF8M
4	Eje Stem	Inox AISI-316 S.Steel AISI-316
5	Asiento Ball seat	PTFE+15% GF
6	Junta Gasket	PTFE+Grafito PTFE+Graphite
7	Arandela Thrust washer	PTFE+Grafito PTFE+Graphite
8	Tórica O'Ring	FKM
9	Empaquetadura Packing	PTFE
10	Anillo prensa Gland	Inox AISI-304 S.Steel AISI-304
11	Arandela Belleville Belleville washer	Inox AISI-301 S.Steel AISI-301
12	Tuerca Nut	Inox AISI-304 S.Steel AISI-304
13	Arandela Washer	Inox AISI-304 S.Steel AISI-304
14	Tope Stopper	Inox AISI-304 S.Steel AISI-304
15	Tornillo Bolt	Inox AISI-304 S.Steel Aisi-304
16	Tuerca Nut	Inox AISI-304 S.Steel AISI-304
17	Arandela Grover Grover washer	Inox AISI-304 S.Steel AISI-304
18	Maneta Handle	Inox AISI-304 S.Steel AISI-304
19	Funda Handle sleeve	Vinilo Vynil
20	Antigiro Lock Washer	Inox AISI-304 S.Steel AISI-304



DIMENSIONES / DIMENSIONS :

DN ND	Bore	A	L	M	T	H	CxC	ISO 5211	Kvs	Peso Weight
1/2"	15	60	65.5	112	24	11	9X9	F-03/F-04	24	0,72
3/4"	20	70	76.2	138	30	11	11X11	F-04/F-05	43	1,16
1"	25	70	83.3	138	33.5	11	11X11	F-04/F-05	83	1,50
1 1/4"	32	88	91.3	160	41,5	15	14X14	F-05/F-07	130	2,53
1 1/2"	40	94	103.3	205	51,5	15	14X14	F-05/F-07	205	3,36
2"	50	100	116.5	205	63	15	14X14	F-05/F-07	340	4,63
2 1/2"	65	150	147.3	330	83.5	19	17X17	F-07/F-10	520	10,28
3"	80	165	169	330	100	19	17X17	F-07/F-10	1100	13,48
4"	100	175	198	340	118.5	19	17X17	F-07/F-10	1820	21,83



DN ND	B	C	D	E	F	G
1/2"	15	70	60	40	25	3
3/4"	20	85	75	50	25	3
1"	25	95	80	5	25	3
1 1/4"	32	110	90	60	25	3
1 1/2"	40	130	110	74	25	3
2"	50	150	140	91	25	3
2 1/2"	65	185	175	8	28	5
3"	80	200	185	128	28	5
4"	100	240	220	150	28	5