

RETENCIONES / CHECK VALVES

VÁLVULA DE RETENCIÓN DISCO 2 PZAS INOXIDABLE CONEXIONES ROSCADAS PN-63 2 PIECES S.STEEL DISC CHECK VALVE THREADED ENDS NP-63



VALVESEAL
valves & sealing solutions

TF-DCV-SS-T



UTILIZACIÓN / APPLICATION :

Aplicaciones en Industria química, farmaceutica, petroquímica, industria, etc.
Chemical and pharmaceutical, petrochemical industries, industry, etc.

CARACTERÍSTICAS GENERALES / GENERAL CHARACTERISTICS :

Gama / Range: DN-1/4" - DN-2"
Construcción Inox 1.4408 / Stainless steel 1.4408 (AISI-316)
Junta de cierre PTFE+15% fibra de vidrio / Gasket PTFE filled with 15% glass fiber .
Disco con muelle AISI-316 / Spring SS 316 .
Rosca BSP / BSP Threadad .
Montaje en todas posiciones / All positions (respect the flow direction indicated by the arrow).

NORMATIVAS / STANDARDS :

Fabricación / Manufacture according to ISO 9001 : 2015.
Directiva 2014/68/UE / Directive 2014/68/UE : Products excluded from directive (Article 4. § 3)
Rosca BSP / BSP Threadad: ISO 228-1
Pruebas / Pressure tests according to API 598, table 6.
ATEX / ATEX Group II Category 2 G/2D Zone 1 & 21 Zone 2 & 22.

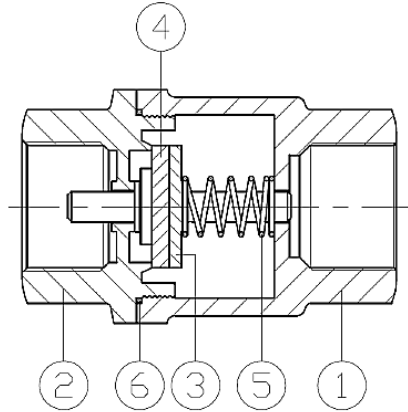
CONDICIONES DE SERVICIO / WORKING CONDITIONS :

Máxima presión de trabajo / Maximum Working Pressure : 63 bar.
Temperatura máxima del fluido / Maximum allowed fluid Temperature : -20 °C / +200 °C.
Uso con vapor saturado / Used saturated steam: 14 Bar max.



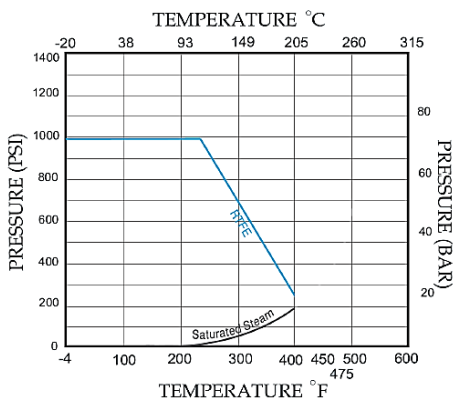
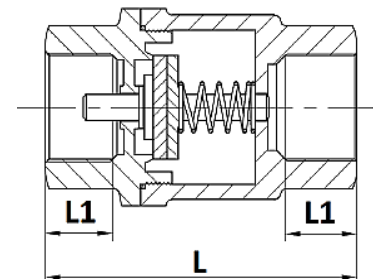
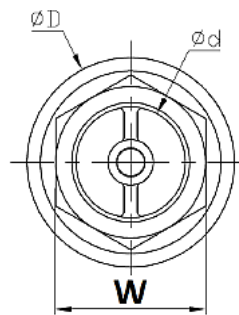
MATERIALES / CONSTRUCTION :

No.	Pieza Part	Material Material
1	Cuerpo Body	Inoxidable 1.4408 Stainless steel 1.4408
2	Terminal Cover	Inoxidable 1.4408 Stainless steel 1.4408
3	Disco Disc	Inoxidable 1.4408 Stainless steel 1.4408
4	Junta Gasket	PTFE + 15% glass fiber
5	Muelle Spring	Inoxidable 316 Stainless steel 316
6	Junta cuerpo Bdy Gasket	PTFE + 15% glass fiber



DIMENSIONES / DIMENSIONS :

DN ND	Ød	ØD	L	L1	W	Kvs (m3/h)	Peso Weight
1/4"	10	34.3	58,7	12.5	22	2.6	0.18
3/8"	10	34.3	58,7	12.5	22	2.6	0.17
1/2"	15	34.3	58,7	12.5	26	3.8	0.19
3/4"	20	46	72.9	16	33	5.1	0.4
1"	25	54	88.9	20	39	8	0.6
1 1/4"	32	62.5	106.2	22	49	10.3	1
1 1/2"	40	73.5	126.5	22	55	12.8	1.5
2"	50	90.5	127	23	69	16	2.2



PRESIÓN DE APERTURA / DIMENSIONS OPENNING PRESSURE (mBar):

DN	↑	↓	→
8	20	19	20
10	20	19	20
15	21	20	21
20	21	20	21
25	22	21	22
32	23	22	24
40	24	22	24
50	25	23	25

Las especificaciones del producto están sujetas a modificaciones sin previo aviso. The specifications of the presented products are open to modifications without previous advice.