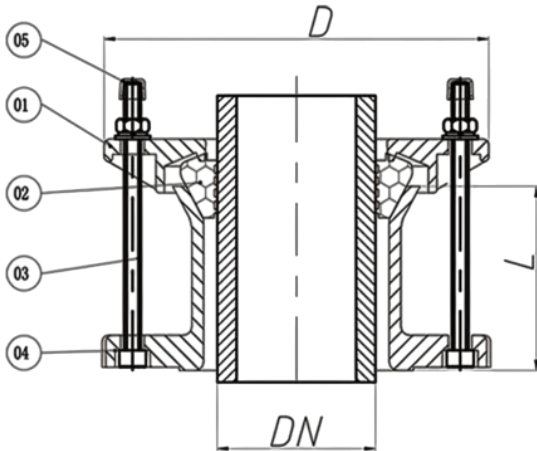


UNIVERSAL FLANGE ADAPTOR – MODEL: FIG08

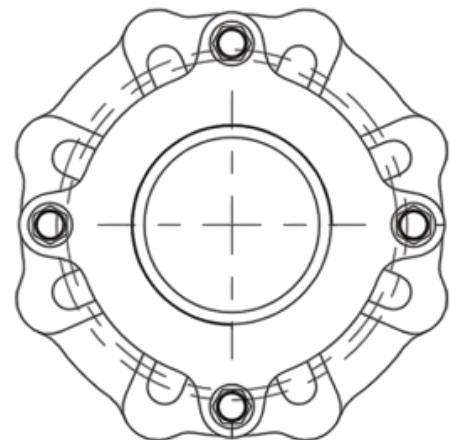
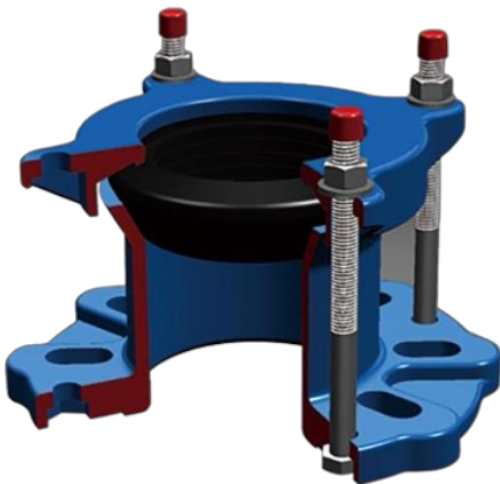


PRODUCTS STANDARDS

Design	BS / DIN / EN/ ISO
Test	EN 12266-1
Working Pressure	PN10/ PN16
Max Temperature	80°C



NO.	MAIN PART	MATERIAL
1	Pressing cover	GJS500-7
2	Rubber ring	EPDM
3	Bolt	GD4.8 / S.S
4	Body	GJS500-7
5	Plastic cap	PLASTIC



DN	Range (mm)	L (mm)	D (mm)	Bolt	
				Size	Quantity
DN50	59-72	75	165	M12*130	2
DN65	72-85	75	185	M12*130	2
DN80	88-103	76	185	M12*130	4
DN100	93-117	78	218	M12*130	4
DN100	105-122	78	218	M12*130	4
DN100	108-128	78	218	M12*130	4
DN125	125-140	78	250	M12*130	4
DN125	132-146	78	250	M12*130	4
DN125	138-153	78	250	M12*130	4
DN150	155-175	80	272	M12*130	4
DN150	158-182	80	272	M12*130	4
DN175	192-210	85	312	M12*130	4
DN200	218-235	85	335	M12*130	4
DN225	235-252	85	335	M12*130	4
DN225	250-267	85	405	M12*130	4
DN250	265-280	90	405	M12*130	6
DN250	272-289	90	405	M12*130	6
DN300	315-332	90	460	M12*130	6
DN300	322-339	90	460	M12*130	6
DN350	351-368	110	510	M16*180	8
DN350	374-391	110	510	M16*180	8
DN350	386-415	110	510	M16*180	8
DN400	400-429	110	580	M16*180	8
DN400	410-436	110	580	M16*180	8
DN400	418-435	110	580	M16*180	8
DN400	425-442	110	580	M16*180	8
DN450	455-472	120	640	M16*180	10
DN450	476-493	120	640	M16*180	10
DN500	500-532	130	690	M16*180	10
DN500	527-544	130	690	M16*180	10
DN600	600-630	150	820	M16*180	10
DN600	630-647	150	820	M16*180	10
DN700	738	150	860	M16*180	12
DN800	842	150	975	M16*180	12
DN900	945	150	1075	M16*180	14
DN1000	1048	150	1205	M16*180	14
DN1100	1152	150	1305	M16*180	16
DN1200	1265	150	1435	M16*180	16
DN1400	1465	150	1635	M16*180	18
DN1500	1565	150	1750	M16*180	18
DN1600	1668	150	1860	M16*180	20

Designs and specifications shown are subject to change without notice due to our continuing program of product development.